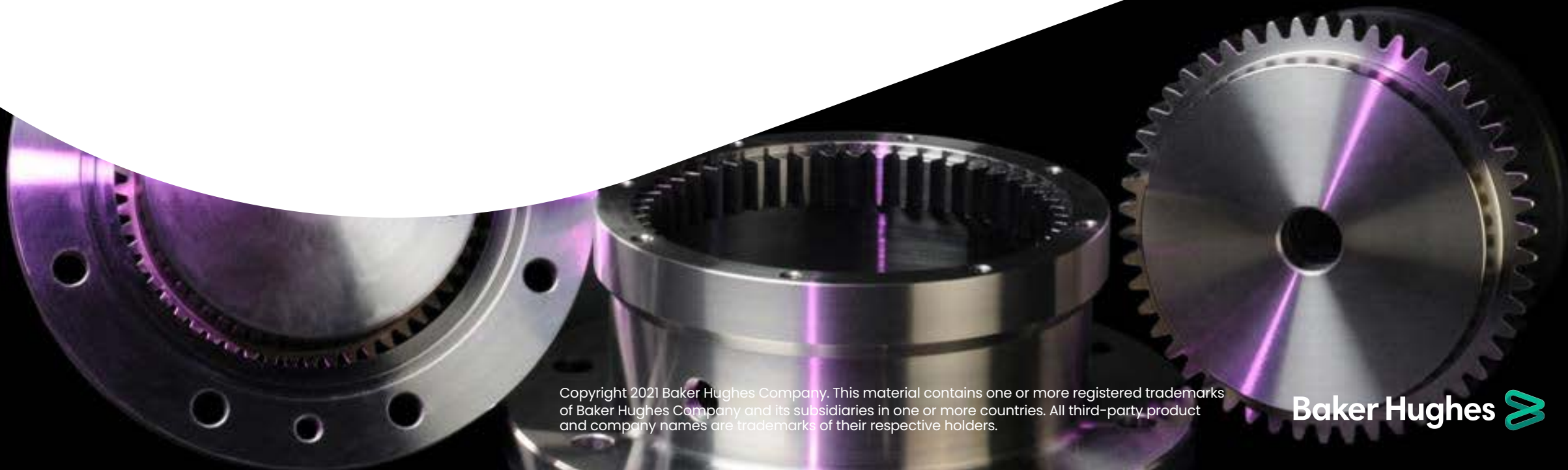


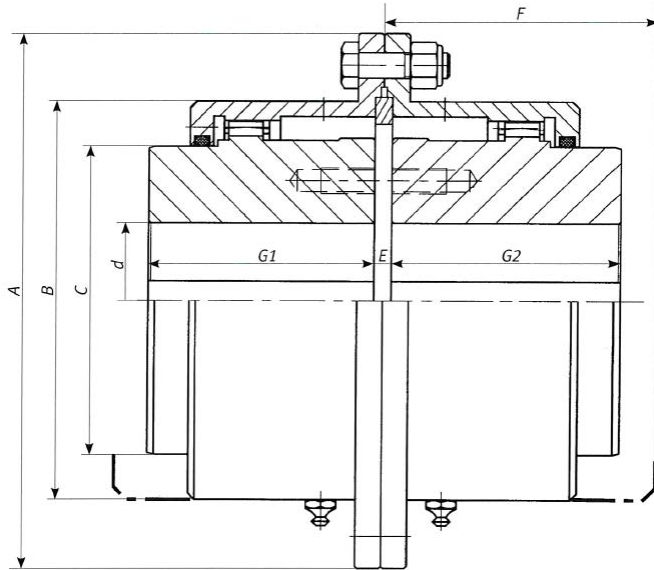
Specifications tables

AFC & AFX couplings



Copyright 2021 Baker Hughes Company. This material contains one or more registered trademarks of Baker Hughes Company and its subsidiaries in one or more countries. All third-party product and company names are trademarks of their respective holders.

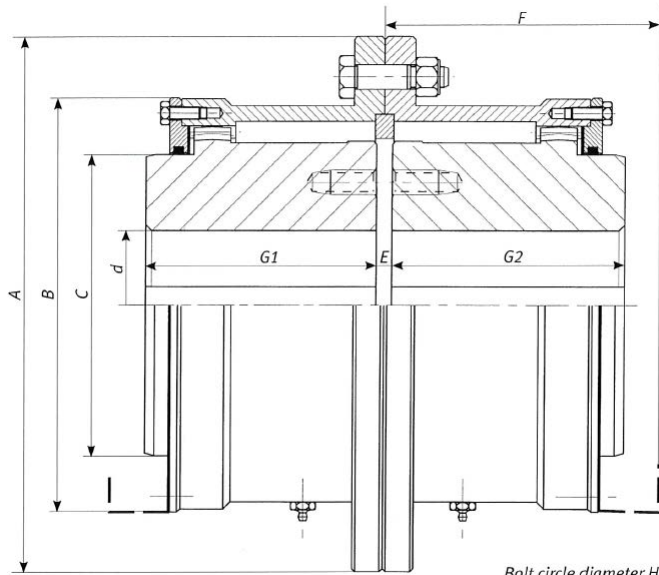
AFC series



Bolt circle diameter H
Number of bolts L
Bolt diameter M

AFC SIZE	Tt max. (daNm) at basic speed	Max. speed (rpm), grease lube	Max. speed (rpm), oil lube	Bore d (mm)			Dimensions (mm)										With d max. shrink fit	
				In stock	Max. key fit	Max. shrink fit	A	B	C	E	F	G1/G2	H	L	M	Weight kg	J Kg.m ²	
42	151	5,158	6,955	12	42	35	116	82	60	3	67	55	100	6	7	3.1	0.004	
53	287	4,576	6,171	16	53	48	145	104	75	4	86	65	125	6	8	6.5	0.013	
65	467	4,174	5,628	20	65	60	175	124	93	5	101	75	150	8	10	10.6	0.030	
75	659	3,862	5,207	24	75	70	205	144	110	6	115	85	175	8	12	15	0.065	
90	1,065	3,587	4,837	28	90	80	230	166	126	7	130	95	200	10	12	21	0.113	
100	1,419	3,383	4,562	32	100	90	250	186	144	8	145	105	220	10	12	30	0.193	
115	1,906	3,194	4,306	36	115	100	280	208	161	9	158	115	245	12	14	36	0.298	
125	2,671	3,047	4,109	40	125	110	300	228	178	10	171	125	265	12	14	48	0.450	
140	3,741	2,876	3,878	44	140	125	335	256	200	10	188	138	295	12	16	61	0.670	
160	4,634	2,730	3,682	50	160	140	370	284	224	12	211	156	330	12	16	83	1.160	
180	6,116	2,605	3,513	56	180	160	400	312	246	14	236	175	355	12	18	115	1.900	
200	8,152	2,496	3,365	64	200	180	440	340	270	16	266	200	390	12	20	171	3.250	
220	11,452	2,355	3,175	72	220	200	495	382	302	18	299	225	440	12	22	237	6.000	
240	16,122	2,229	3,006	80	240	220	550	426	340	20	329	250	490	12	24	317	10.13	

AFX series



Bolt circle diameter H
Number of bolts L
Bolt diameter M

AFX SIZE	Tt max. (daNm) at basic speed	Max. speed (rpm), grease lube	Max. speed (rpm), oil lube	Bore d (mm)				Dimensions (mm)									With d max. shrink fit	
				In stock	Max. key fit	Max. shrink fit	Max I&S std	A	B	C	E	F	G1/G2	H	L	M	Weight kg	J Kg.m ²
30	295	4,553	6,139	12	50	50	40	150	114	70	3	75	60	125	6	8	7	0.015
40	444	4,174	5,629	16	65	60	50	180	132	88	4	84	68	150	8	10	11	0.035
50	729	3,848	5,188	20	80	70	60	210	157	108	5	98	80	175	8	12	18	0.077
60	1221	3,576	4,821	24	90	85	70	240	177	125	6	111	90	200	10	12	26	0.147
70	1607	3,364	4,536	28	100	95	80	260	195	141	7	126	105	220	10	12	34	0.230
80	2141	3,202	4,318	32	110	105	90	290	225	157	8	144	120	245	12	14	51	0.430
90	2,855	3,048	4,109	36	125	115	100	310	246	175	9	158	135	265	12	14	66	0.640
100	3,965	2,895	3,903	40	140	130	110	345	268	195	10	174	150	295	12	16	87	1.040
110	4,793	2,763	3,725	44	150	140	125	380	288	210	10	185	165	330	12	16	112	1.600
125	6,608	2,624	3,538	50	170	160	140	410	325	241	12	211	185	355	12	18	153	2.670
140	8,086	2,512	3,387	56	190	180	160	455	352	267	14	233	210	390	12	20	204	4.320
160	12,088	2,362	3,185	64	215	200	180	510	392	305	16	265	240	440	12	22	300	7.950
180	16,866	2,236	3,014	72	245	230	200	570	444	343	18	298	270	490	12	24	420	14.15
200	25,880	2,115	2,852	80	270	250	220	630	488	381	20	330	300	545	12	27	576	23.50
220	30,265	2,049	2,763	170	290	270	250	630	521	405	22	350	275	555	16	30	586	26.25
250	40,739	1,957	2,639	190	320	300	280	685	566	450	24	385	310	605	16	30	787	42.00
280	52,686	1,839	2,480	210	360	340	310	760	640	510	28	434	350	678	18	33	1,109	74.50
310	72,072	1,746	2,354	240	400	380	350	844	710	570	30	483	390	754	18	36	1,532	127.0
350	96,965	1,645	2,218	280	460	430	400	930	798	645	35	511	420	840	18	42	1,994	204.0
400	13,6715	1,550	2,089	320	520	485	450	1035	894	728	40	557	455	940	22	45	2,740	352.0
450	167,228	1,455	1,962	360	590	550	500	1,160	1,010	825	45	607	495	1,060	24	48	3,787	621.0
500	320,448	1,383	1,864	400	640	600	550	1,280	1,120	920	50	658	535	1,170	24	52	5,093	1,022