

ParaSorb EL 5000 extended life solid inhibitor

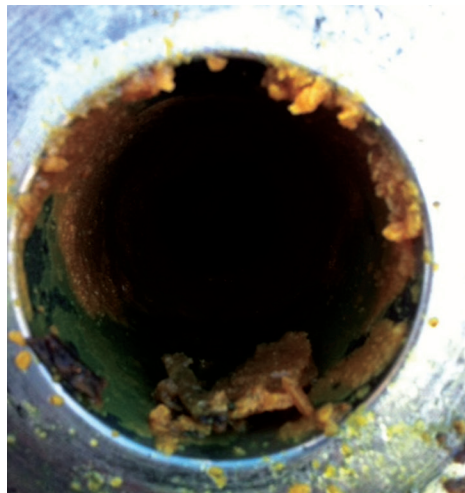
Stop paraffin deposits with proactive, long-lasting flow assurance

Applications

- Oil and gas wells that exhibit paraffin deposition characteristics

Features and Benefits

- Contains a broad-use paraffin inhibitor
 - Provides excellent long-term paraffin inhibition in a wide range of crudes
- Releases inhibitor in the propped formation
 - Reduces downtime caused by paraffin buildup in the near wellbore and tubulars
- Offers compatibility with most fracturing fluids
 - Improves protection because substrate is inert and an integral part of the proppant pack
- Increases the volume of treated oil
 - Treats as much as 3X the volume of oil as compared to first-generation inhibitors



Baker Hughes **ParaSorb™ EL 5000 extended life solid inhibitor** is a controlled release additive that slowly desorbs from the proppant pack to provide immediate and long-term protection against paraffin deposition. ParaSorb EL material is a dry, solid particle onto which a specialty chemical has been adsorbed. The material can be pumped as part of a stimulation treatment to proactively protect downhole and surface equipment from damaging paraffin deposits—maximizing hydrocarbon flow and minimizing production interruptions and remedial treatments.

The ParaSorb EL technology is specially formulated to provide extended protection times compared to the days or weeks of protection offered by liquid inhibitors and the months of flow assurance provided by other ParaSorb materials. In fact, cold-finger and pour-point testing has shown

treatment life can be increased up to 3X longer than other ParaSorb solid inhibitors.

Extended flow assurance and monitoring minimize production interruptions

The ParaSorb EL 5000 inhibitor can be offered as part of a Baker Hughes **StimPlus™ service** and is compatible for use with all common fracturing fluids. In the StimPlus service, Sorb products and other inhibitors are added to stimulation fluid and placed deep into the formation where they can prevent deposition and costly production problems.

The service offers a single-source solution that includes frac-treatment water-source prescreening; optimized, on-the-fly treatments; and ongoing reservoir and well asset monitoring—maximizing post-frac production and minimizing post-frac intervention costs.

Technical Data

Typical properties

Appearance	Off-white to tan solid granules
Odor	Mild
Typical maximum temperature	300°F (149°C)
Specific gravity at 60°F	1.5 to 1.8
Bulk density range	26 to 32
Packaging	50-lb. bags

ParaSorb EL 5000 Endurance Testing

