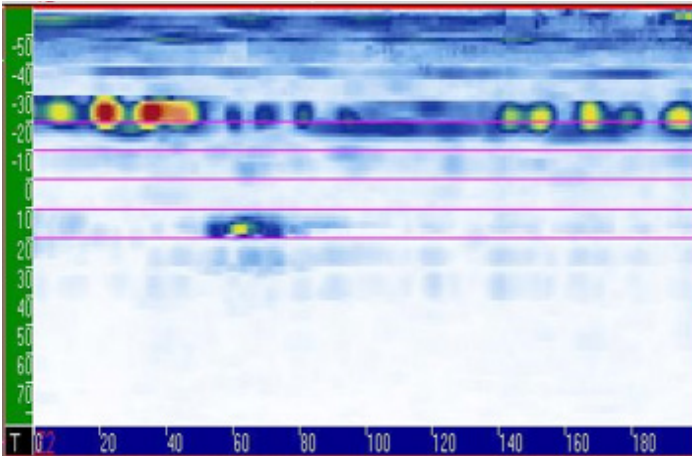
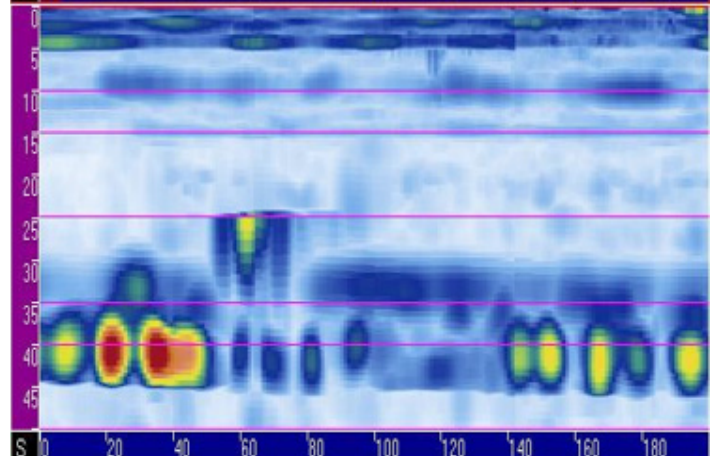


UT scanning results



C-scan of weld displaying indications as high reflection signals (red and yellow amplitudes). The weld geometry is displayed in the C-Scan for localization. Cursors are available after the scan for determining the position of indications with respect to the weld geometry.

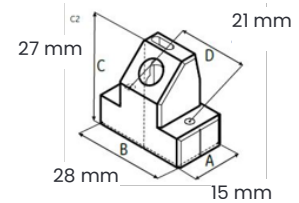


B-scan of weld displaying the depths of indications. The double V weld geometry of a 25 mm thick part is shown. Indications are detected between 1st and 2nd skip in the upper part of the weld at a depth of about 10 mm.

Phased-Array probes

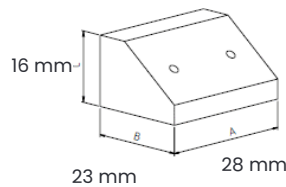
Inspection of welds with a typical material thickness of up to 25 mm

Part number	Connector type	Frequency (MHz)	Element	Pitch (mm)	Aperture (mm)	Elevation (mm)
115-100-001	Tyco (Mentor UT w/MUX)	2	8	1	8x9	9
115-100-002	Tyco (Mentor UT w/MUX)	4	16	0.5	8x9	9
115-110-001	Mentor UT	2	8	1	8x9	9
115-110-002	Mentor UT	4	16	0.5	8x9	9



Wedges

Part number	
0600218	NPA36°M (flat)
0600183	NPA36°M R. (A-D)**



** How to order custom wedge curvatures (see back page)

Instrument specific wedge parameters for 0600218 and 0600183 type „A“ and „B“

Instrument	Material	Sound velocity		Incident angle (deg)	Primary Offset		Height of reference element	
		(m/s)	(in/us)		(mm)	(in)	(mm)	(in)
Phasor	Polystyrol	2380	0.0937	36	17	0.669	10.5	0.413



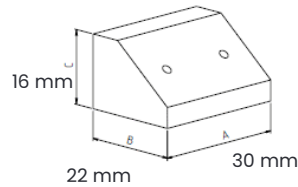
High frequency focused Phased-Array probes

Inspection of welds with thin material thickness less than 8 mm

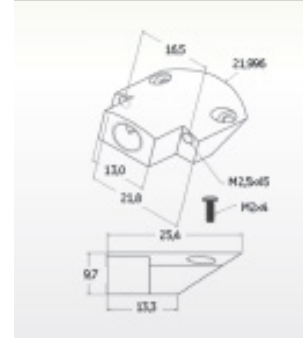
Part number	Connector type	Frequency (MHz)	Element	Pitch (mm)	Aperture (mm)	Elevation (mm)	Internal Focus (mm)
115-100-047	Tyco (Mentor UT w/MUX)	7.5	16	0.5	8x10	10	35
115-100-048	Tyco (Mentor UT w/MUX)	10	16	0.4	6.5x7	7	35
115-110-047	Mentor UT	7.5	16	0.5	8x10	10	35
115-110-048	Mentor UT	10	32	0.3	9x7	7	35

Wedges	
0600219	NPA38°M (flat)
0600220	NPA38°M R.. (A-D)**

Instrument specific wedge parameters for 0600219 and 0600220 type 'A' and 'B'



Instrument	Material	Sound velocity		Incident angle (deg)	Primary offset		Height of reference element	
		(m/s)	(in/us)		(mm)	(in)	(mm)	(in)
Phasor	Rexolite	2337	0.092	38.5	15.6	0.614	7.6	0.299



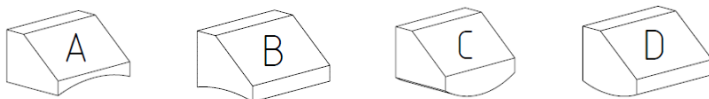
Scanner packages

Scanner packages	
PALM Flat Scanner with case	0600176
Encoder Adapter Mentor UT	0600185

** How to order custom wedge curvatures

Applies only to part numbers 0600183 and 0600220.

Choose letter specifying the curvature geometry according to below pictures.



When placing the order use the curvature specification and radius of the curvature to specify the wedge.

Example: ordering 0600183 NPA36°M R.. (A-D) in curvature geometry "A" with 60 mm radius.

Use the following identifier when ordering

0600183 NPA36°M R60 A